

Referring to the diagram, give the value of each trigonometric ratio.

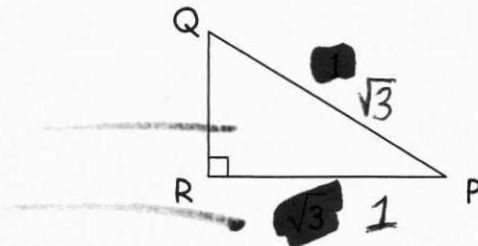
1. $\sec \square (p)$

2. $\csc \square (p)$

3. $\cot \square (p)$

4. $\sec \square (q)$

5. $\csc \square (q)$



6. $\cot \square (q)$

~~7. $\sec \square (r)$~~

~~8. $\csc \square (r)$~~

~~9. $\cot \square (r)$~~

Referring to the diagram, give the value of each trigonometric ratio.

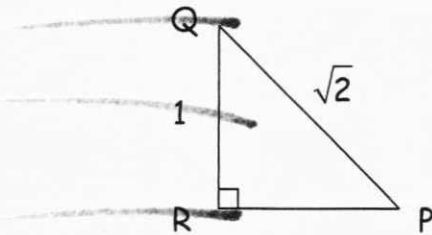
1. $\sec \square (p)$

2. $\csc \square (p)$

3. $\cot \square (p)$

4. $\sec \square (q)$

5. $\csc \square (q)$



6. $\cot \square (q)$

~~7. $\sec \square (r)$~~

~~8. $\csc \square (r)$~~

~~9. $\cot \square (r)$~~

Draw and label right triangle, ABC, with the following ratios.

17. $\sin(A) = \frac{15}{17}$

18. $\tan(A) = \frac{6}{4}$